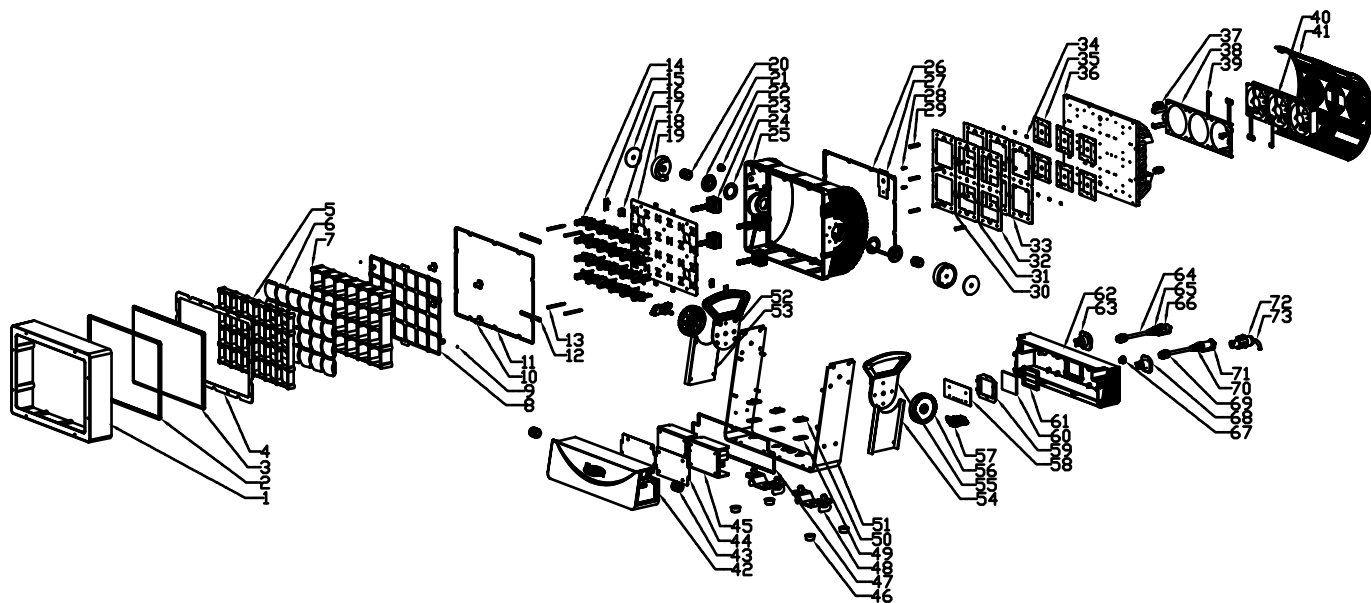


	1	2	3	4	5	6	7	8	9	
	NO	J KLM	O IAI (./)	E FGH						
			GB/T1804-2000	2017-05-05						
A	S.N.	PART CODE.	draw NO.	ITEM NO.	QTY					
B	1	7060000051	LJ-Y31501-08	Front cover	1					
C	2	7030200120	LJ-Y31501-14	Front cover waterproof rubber ring	1					
D	3	5070000127	LJ-Y31501-18	toughened glass	1					
E	4	7010502073	LJ-Y31501-33	Front cover silicone pressing plate	1					
F	5	7030100329	LJ-Y31501-41	lens top cover	1					
G	6	5050100094	TOP-PTA5018	5050 LENS	24					
H	7	7030100330	LJ-Y31501-42	lens lower cover	1					
I	8	7010502193	LJ-Y31501-20	focus fixed plate	1					
	9	7050500001		Powerful magnet:Φ3*2	2					
	10	7050000347	LJ-S71302-50	motor flange	4					
	11	7030200121	LJ-Y31501-15	Waterproof ring for cover shell	1					
	12	7010502074	LJ-Y31501-34	Locating piece	2					
	13	7020300097	S70801-14	M3X52*7Single head interval column	4					
	14	5050100093	TOP-LF55W	light pipe	24					
	15	8010001389	S70202-04A-004	sensor PCBA	2					
	16	7030200091	LJ-L20701-39	The silicone gasket:Φ53X2	2					
	17	7010502071	LJ-Y31501-22	fixing plate for sensor PCB	2					
	18	7010502070	LJ-Y31501-21	Motor fixed plate	1					
	19	7050000358	LJ-Y31501-37	The handle of the flange	2					
	20	5061100016	PL-XC-0062	waterproof power cable	1					
	21	7050000372	LJ-Y31501-36	flange of side cover	2					
	22	7030100247	LD-FCL-26WHD7	Waterproof air valve:M12*1.5	2					
	23	5030000042	14HSL1008C-65T8-6	motor	4					
	24	7030200127	LJ-Y31501-32	Side cover waterproof rubber gasket	2					
	25	7060100133	LJ-Y31501-07	light housing	1					
	26	7030200123	LJ-Y31501-31	back cover waterproof gasket	1					
	27	8010001493	Y31501-04D-001	Adapter PCBA	1					
	28	7020300088		Male female copper column:M3*7+6	2					
	29	7020300121	YA40201-21	Male female copper column:M4*25.8+6	8					
	30	8010001546	Y31501-01E-003	LED driver PCBA	1					
	31	8060000777	CPCS0647-2U01	software	1					
	32	8010001544	Y31501-01E-001	LED driver PCBA	1					
	33	8060000777	CPCS0647-2U01	software	1					
	34	7030200125	LJ-Y31501-53	The silicon wafer	3					
	35	5020100169	LE RTDLW S2WN	LED	24					
	36	8010001547	Y31501-03E-001	LED PCBA	6					
	37	7040200169	ZJ-Y31501-01-00	The heat pipe radiator	1					
	38	6120500015		joint connectoro M12*1.5	2					
	39	7010502101	LJ-Y31501-54	The fan holder	1					
	40	7010502102	LJ-Y31501-55	Fan pressing plate	6					
	41	5010200009	PL-FS-04	Waterproof fan components	3					
	42	7060000052	LJ-Y31501-30	back cover	1					
	43	7060200075	LJ-Y31501-10	front cover for base	1					
	44	5061100015	PL-XC-0061	waterproof power cable	1					
	45	7010502124	LJ-Y31501-35	The power fixing plate	2					
	46	5040000153	BLH400W127-24VIP	power supply	2					
	47	7030200113		robber washer:Φ25*Φ20*13	4					
	48	7030200122	LJ-Y31501-16	base waterproof rubber ring	1					
	49	8050000053		Quick lock handle components	2					
	50	7010501513	LJ-L20701-38	Fast locking plate	4	S.N	Material No.	Draw NO.	Designation	QTY
	51	7021600021		quick lock seat	4	64	5060400087	PL-XC-0032	Waterproof signal cable	2
	52	7010600264	LJ-Y31501-25	bracket	1	65	6120800006	NC5FX-HD	DMX connector:5P; female>	1
	53	7060100134	LJ-Y31501-38	The left handle	1	66	7030100255	YA40301-33-00	DMX female end cap components	1
	54	7010600253	LJ-Y31501-23	left cover plate for handle	1	67	7030100247	LD-FCL-26WHD7	Waterproof air valve:M12*1.5	1
	55	7010600254	LJ-Y31501-24	right cover plate for handle	1	68	6120600021	SCNAC-MPX	seal sleeve; in>	1
	56	7060100135	LJ-Y31501-39	The right handle	1	69	6120200001	NAC3MPX	power socket; in>	1
	57	7030100328	LJ-Y31501-17	decoration rope	2	70	6120500008		joint connector:metal PG9	2
	58	7020600092	LJ-Y31202-52	knob:M6*30	2	71	6120800007	NC5MX-HD	DMX connector:5P; male>	1
	59	8010001543	Y31501-02B-002	display PCBA	1	72	7030100254	YA40301-32-00	DMX Male end cap components	1
	60	8060000776	CPCS0647-1U01	software	1	73	6121000001	NAC3FX-W	power plug	1
	61	7010502072	LJ-Y31501-27	The silicone holder	1		5061500006	PL-XC-0014	US power cable:UL 14AWG/3C L=1830	1
	62	5070000124	LJ-Y31501-19	display glass	1		5060600042	XC-DY-94	EU power cable:VDE 3*1.5MMp L=1830	1
	63	7030200009	LA3702-03	waterproof silicone	1		6120100014		fuse holder; US>	1
	64	7060200074	LJ-Y31501-09	The base back cover	1		6110000011		fuse; US>o T15A/250V	1
	65	6120600020	SCNAC-PPX	sealing sleeve; out>	1		6120100014		fuse holder; EU>	1
	66	6120300001	NAC3FPX	power socket; out>	1		6110000009		fuse; EU>o T8A/250V	1



Elation Lighting | Exploded View | Paladin





